



AppNeta NMP for Windows installation

The AppNeta Native Monitoring Point (NMP) software allows your IT team to monitor your network performance in order to proactively resolve network issues you may experience.

To install this software on your Windows 10 computer:

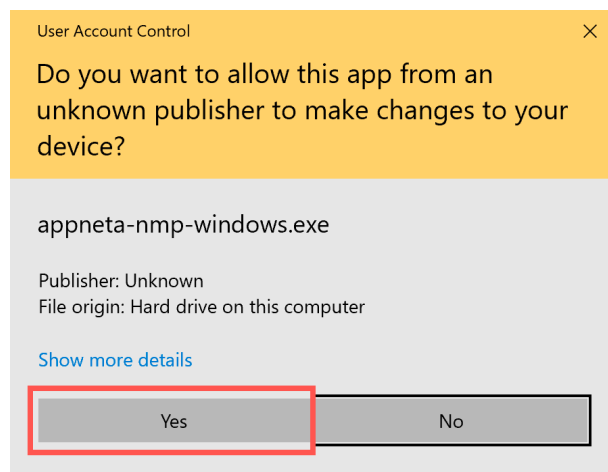
- [Install the NMP software on Windows 10](#)
- [Verify that the software is running](#)

Install the NMP software on Windows 10

1. Make sure that you've downloaded the installation package (e.g., appneta-nmp-for-<org>-windows-<version>.exe).
2. In Windows, press the Windows Logo Key + E to open File Explorer.
3. Select the **Downloads** folder.
4. Double-click the downloaded file (e.g., appneta-nmp-for-<org>-windows-<version>.exe).
5. Depending on your environment, you may receive messages prompting you to approve making changes on your system. You must approve all of these.

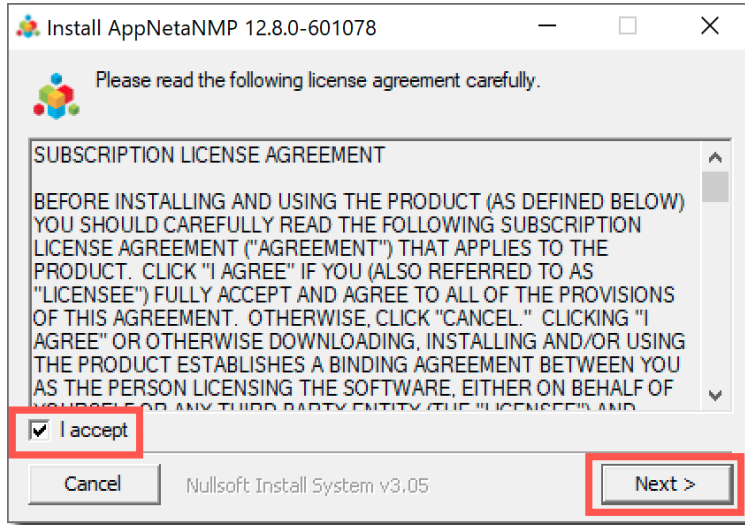
For example:

- Click **Yes**.

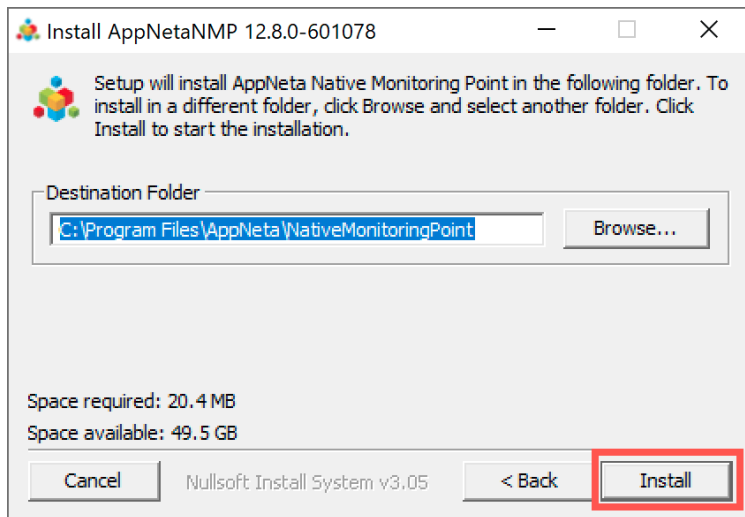




6. Read the license agreement. If you accept it, select **I accept**, and click **Next**.

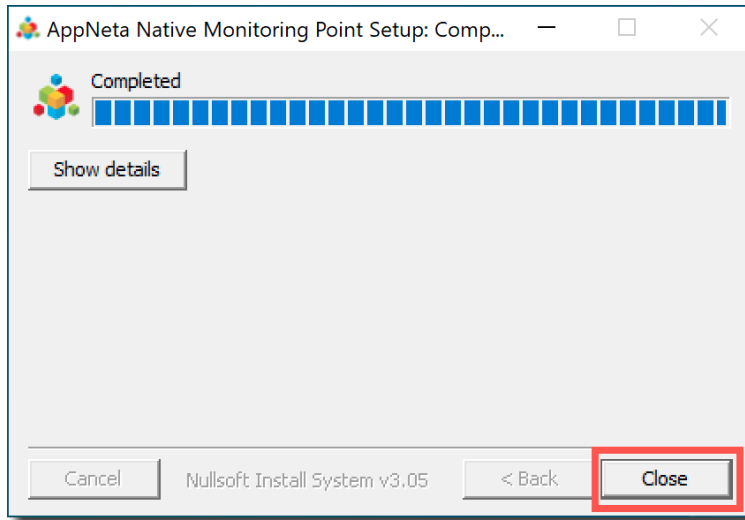


7. Click **Install**.





8. Click **Close**.



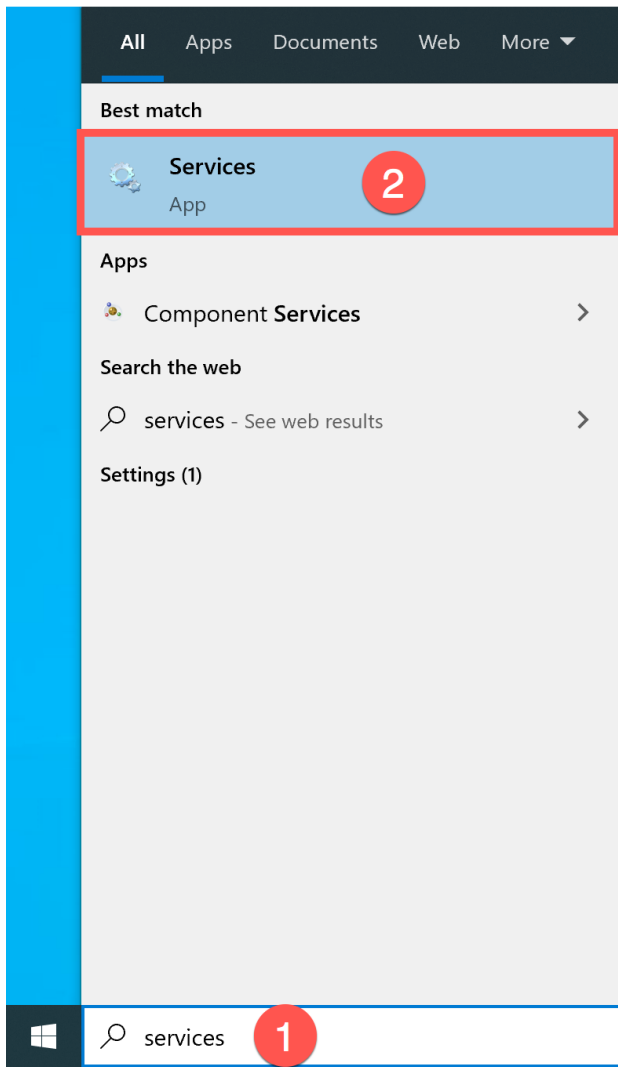
- The NMP software is installed.



Verify that the software is running

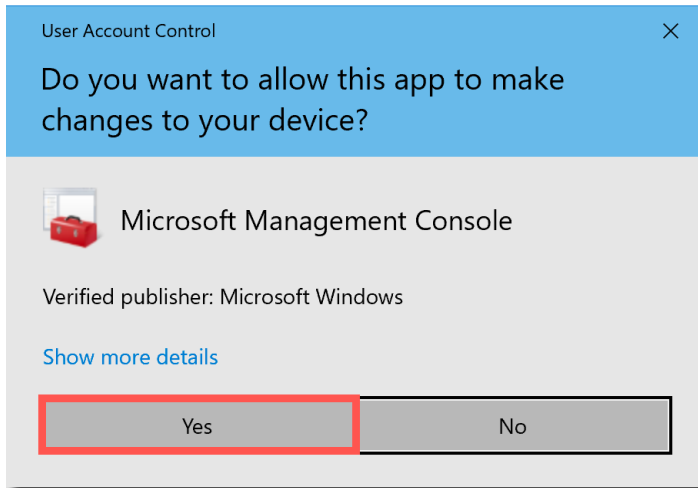
To check that the AppNeta Native Monitoring Point service is running:

1. In the Windows search box (lower left), type “services”.
2. Click **Services**.





3. If you receive a message prompting you to approve making changes on your system, click **Yes**.



4. Confirm that the “AppNeta Native Monitoring Point” appears in the list and its **Status** is **Running**.

